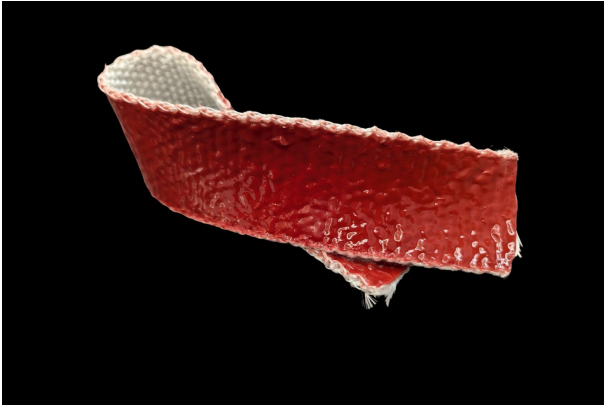


# Firesleeve Tape — CPVC Sprinkler Edition

Penetration & Joint Isolation · Silicone Glass Tape · Made in Britain

FIRE-WALL PENETRATIONS - JOINT WRAPPING - ISOLATION UNDER FIRE-STOPPING SEALANT

## SRF FIRESLEEVE TAPE



### WHAT IS IT?

SRF Firesleeve Tape is manufactured from 'E' glass fibre yarn woven into a tape and coated with high-grade silicone elastomer rubber.

Apply around CPVC pipe at penetrations and wherever fire-stopping sealant will contact the pipe — creating an inert barrier between the CPVC wall and any incompatible compound.

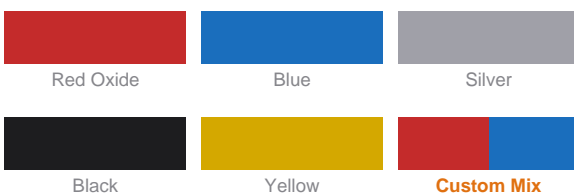
### CPVC TAPE APPLICATIONS

- Fire-wall penetration wrapping
- Isolation under fire-stopping sealant
- Joint and elbow protection
- Terminating and sealing firesleeve ends
- Spray foam contact zone protection
- Wrapping under rubber hangers & clips

### STANDARD FORMAT

Widths available: **25, 50, 75, 100, 125 mm**  
 Method of supply: **30 m coils / cut lengths**  
 Application: **50% overlap for full coverage**

### AVAILABLE COLOURS



Standard colour Red Oxide. Custom colours available.  
 Apply with 50% overlap for full coverage.

### QUICK FACTS

Standard colour	Red Oxide
Continuous operating temp	250 C (482 F)
Molten splash resistance	Outstanding
Flame resistance	Very good
Chemical resistance	Outstanding
Flexibility	Outstanding
Water & oil resistance	Outstanding
Avg. dielectric strength	30 kV+
Wall thickness	3 - 4 mm

### CPVC COMPLIANCE & COMPATIBILITY

✓ EN 45545-2	Fire protection standard
✓ ISO 11925-2	Ignitability of products
✓ IEC 60695-11-10	Classified HB and V0
✓ UL94 V0/V1/V2	UL flammability rating
✓ MSHA Certified	Mine Safety & Health Admin.
✓ Made in Britain	Manufactured in Burnley, UK

CONTINUOUS  
**250C**  
482F

MOLTEN SPLASH  
**1200C**  
2192F

DIELECTRIC  
**30kV+**  
No plasticizers



# Firesleeve Tape — CPVC Sprinkler Edition

Why a Barrier Layer is Essential

CASE STUDIES - FORENSIC EVIDENCE - SOURCES - THE SOLUTION

## The consequences of missing the barrier layer

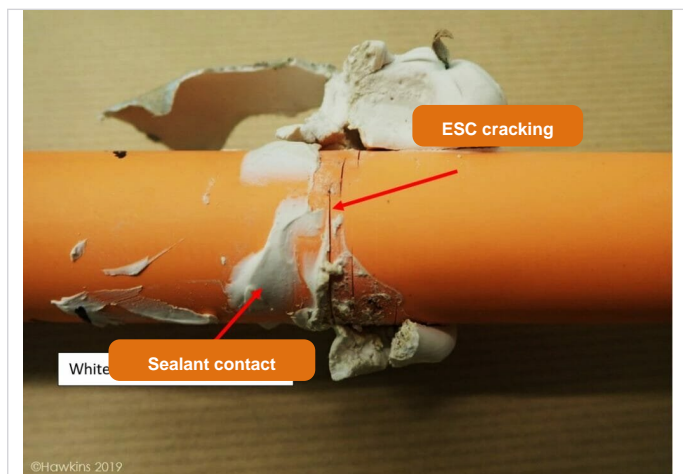
Real-world CPVC pipe failures caused by incompatible materials — documented by independent forensic investigators. Both failures could have been prevented by a silicone firesleeve barrier applied before adjacent materials.

### CPVC FIRE SPRINKLER INSTALLATION



Orange CPVC fire sprinkler pipework — lightweight and fast to install, but vulnerable to chemical contamination from adjacent materials.

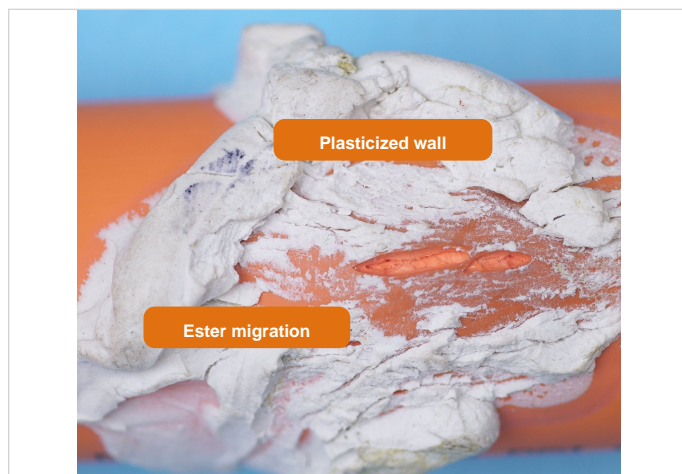
#### CASE 01 — ESC FROM FIRE-STOPPING SEALANT



Hawkins 2019 — CPVC cracking caused by incompatible fire-stopping compound.

Sources: Hawkins Forensic Investigation 2019 / 2020 / 2024 · CROSS Safety Report 1228, February 2024 · Corcoran Consulting & Forensic Engineering 2024

#### CASE 02 — PLASTICIZATION / ESTER MIGRATION



Forensic evidence — pipe wall softened and delaminated by ester compound migration.

### THE SOLUTION

Wrap S Riley Fabrications Firesleeve or Firesleeve Tape around the CPVC pipe at every penetration, joint and hanger point BEFORE any adjacent material is applied. Silicone rubber contains no plasticizers, esters or hydrocarbon compounds and will not migrate into the pipe wall — eliminating the contamination pathway. Tested by Spears Manufacturing for compatibility with FlameGuard CPVC fire sprinkler systems.