



Retrofit Firesleeve — CPVC Sprinkler Edition

Hook & Loop Closure · No System Drain-Down · Made in Britain

IN-SERVICE INSTALLATION - NO SHUTDOWN REQUIRED - OCCUPIED BUILDINGS - REMEDIAL WORKS

SRF RETROFIT FIRESLEEVE



WHAT IS IT?

SRF Retrofit Firesleeve is manufactured from 'E' glass fibre coated with high-grade silicone elastomer rubber, with hook & loop closure.

Installs over existing CPVC sprinkler pipes in service without drain-down, disconnection or system shutdown. Chemically inert — no risk to CPVC pipe wall.

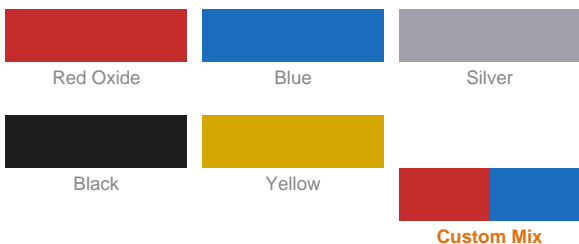
CPVC RETROFIT APPLICATIONS

- Remedial protection on existing installations
- Occupied buildings — no shutdown needed
- Adjacent cable contamination risk zones
- In-service maintenance programmes
- Residential blocks, hotels, schools

STANDARD FORMAT

Inside diameter: **4 mm to 203 mm**
 Method of supply: **15 m coils / cut lengths**
 Hook & Loop size: **16 mm**

AVAILABLE COLOURS



Available in Red Oxide, Blue and Silver. Custom colours available on request.

QUICK FACTS

Standard colour	Red Oxide
Continuous operating temp	260 C (500 F)
Molten splash resistance	Outstanding
Flame resistance	Very good
Chemical resistance	Outstanding
Flexibility	Outstanding
Avg. dielectric strength	30 kV+
Wall thickness	4 mm +/- 0.5 mm
Hook & Loop	Fire retardant, glass-stitched

CPVC COMPLIANCE & COMPATIBILITY

- ✓ EN 45545-2 Fire protection standard
- ✓ ISO 11925-2 Ignitability of products
- ✓ IEC 60695-11-10 Classified HB and V0
- ✓ UL94 V0/V1/V2 UL flammability rating
- ✓ MSHA Certified Mine Safety & Health Admin.
- ✓ Made in Britain Manufactured in Burnley, UK

CONTINUOUS
260C
500F

MOLTEN SPLASH
1200C
2192F

DIELECTRIC
30kV+
No plasticizers



Retrofit Firesleeve — CPVC Sprinkler Edition

Why a Barrier Layer is Essential

CASE STUDIES - FORENSIC EVIDENCE - SOURCES - THE SOLUTION

The consequences of missing the barrier layer

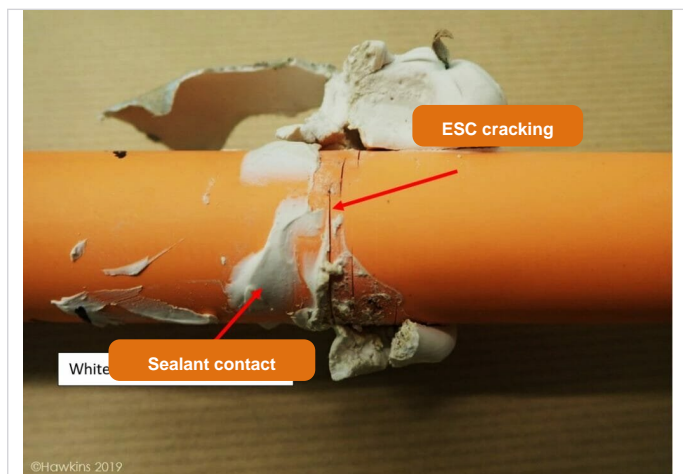
Real-world CPVC pipe failures caused by incompatible materials — documented by independent forensic investigators. Both failures could have been prevented by a silicone firesleeve barrier applied before adjacent materials.

CPVC FIRE SPRINKLER INSTALLATION



Orange CPVC fire sprinkler pipework — lightweight and fast to install, but vulnerable to chemical contamination from adjacent materials.

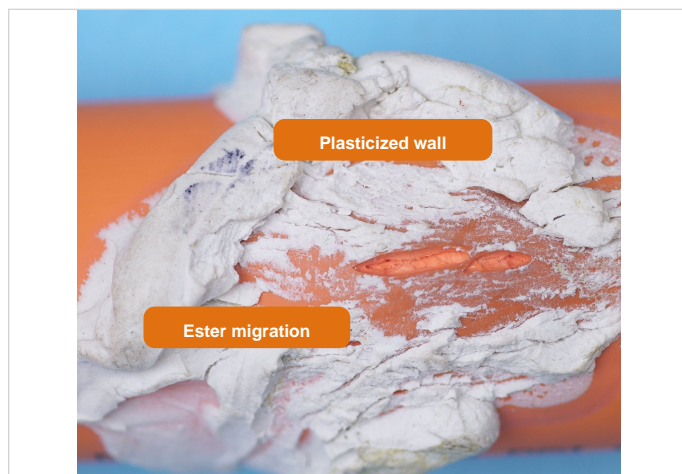
CASE 01 — ESC FROM FIRE-STOPPING SEALANT



Hawkins 2019 — CPVC cracking caused by incompatible fire-stopping compound.

Sources: Hawkins Forensic Investigation 2019 / 2020 / 2024 · CROSS Safety Report 1228, February 2024 · Corcoran Consulting & Forensic Engineering 2024

CASE 02 — PLASTICIZATION / ESTER MIGRATION



Forensic evidence — pipe wall softened and delaminated by ester compound migration.

THE SOLUTION

Wrap S Riley Fabrications Firesleeve or Firesleeve Tape around the CPVC pipe at every penetration, joint and hanger point BEFORE any adjacent material is applied. Silicone rubber contains no plasticizers, esters or hydrocarbon compounds and will not migrate into the pipe wall — eliminating the contamination pathway. Tested by Spears Manufacturing for compatibility with FlameGuard CPVC fire sprinkler systems.